



How to Expand Hard Disk Drive for IPSAN with UNV Guard

How to Expand Hard Disk Drive for IPSAN with UNV Guard?

Description

If the IPSAN (VX-U series) is not fully populated with hard drives at the start of a project and is used together with UG-I500, additional storage capacity can be added later by inserting more hard drives into the IPSAN. This document provides the procedure for doing so.

Note: This method is applicable to most of the scenarios encountered problems, if the method still cannot solve your problem, it is recommended to consult our Tech Support Team.

https://global.uniview.com/Support/Service_Hotline/

Preparation

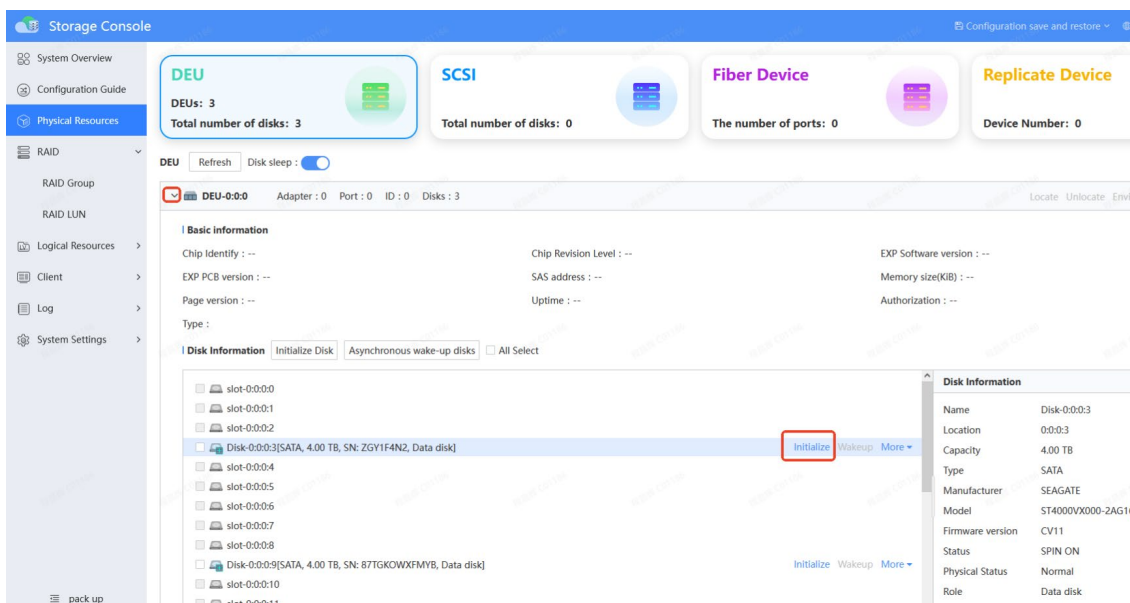
Ipsan, UNV Guard, Computer, Hard Disk Drives

Steps

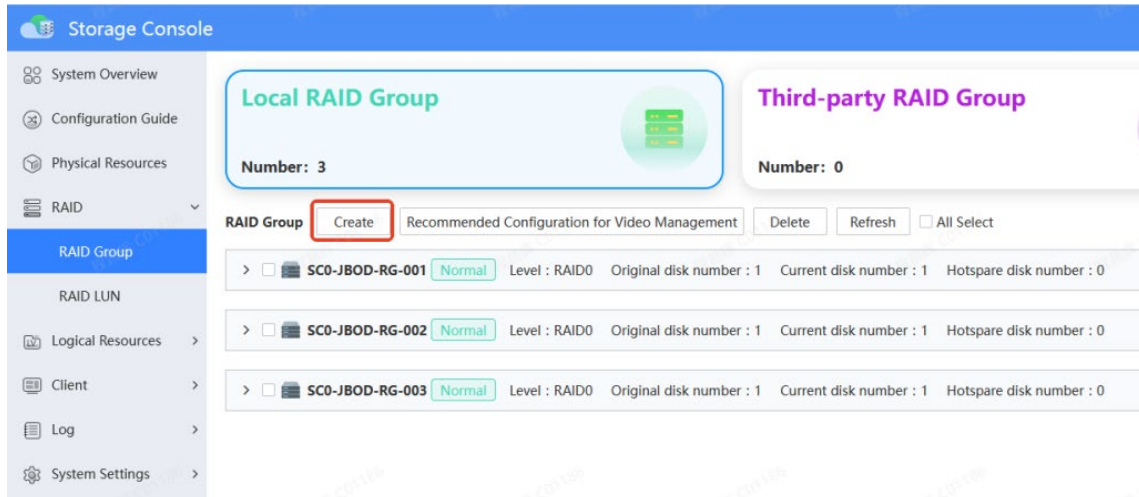
1. Insert New Hard Disk Drives into IPSAN

2. Create New Disk Arrays on IPSAN

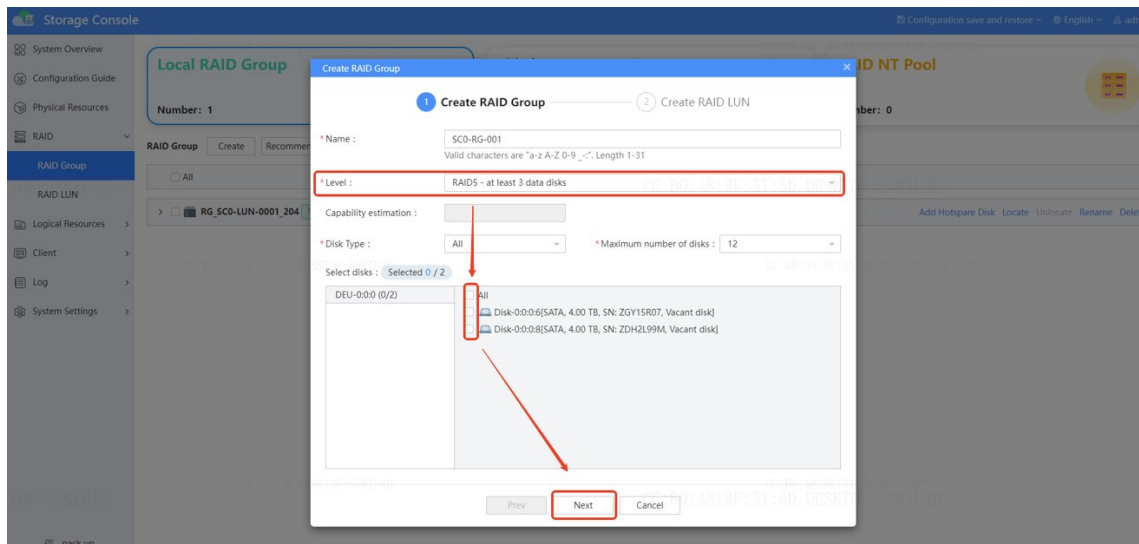
- 1) Log in to the IPSAN web interface ([http://IPSAN IP address](http://IPSAN_IP_address)), using the default username: admin and default password: 123456.
- 2) Go to **Physical Resource** page, Click **“Initialize”** to format the newly inserted hard drives (if the hard drive status shows **“Vacant disk”**, this step can be skipped).



- 3) Navigate to **RAID -> RAID Group**, and click **“Create”** to add new arrays.



- 4) Select the required RAID level according to project requirements, check the new hard drives to be included in the array, and click **“Next”**.



- 5) Keep the default parameters and click **“Confirm”** to complete the RAID array creation.

Create RAID LUN

* Name :
Valid characters are "a-z A-Z 0-9 _-". Length 1-31

Chunk size : 64K 128K

Read Cache : Enabled Disabled


Write Cache : Enabled Disabled

Rebuild Speed : High Middle Low

Synchronize Now : Yes No

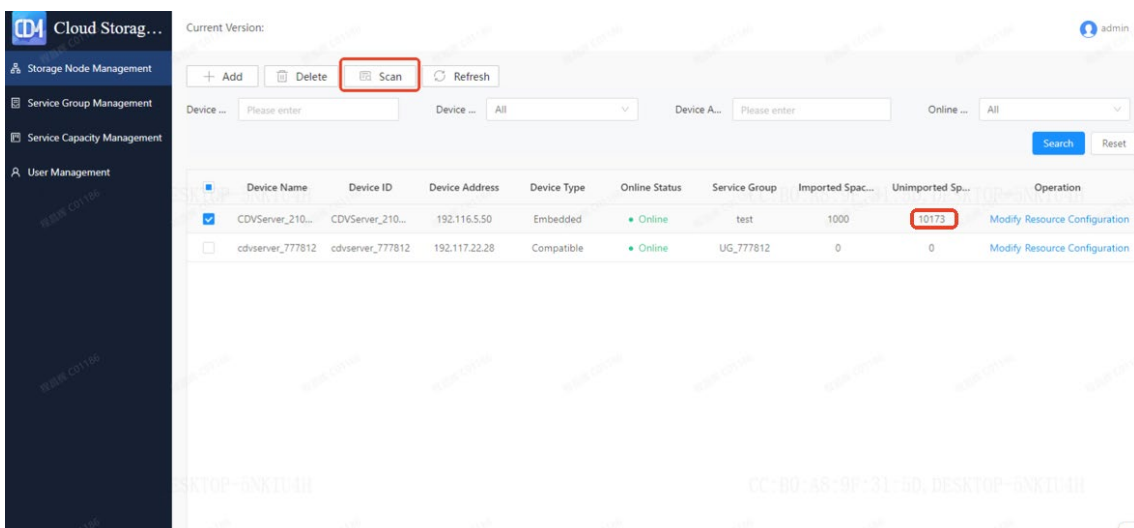
Used as a caching device : Yes No

Select the RAID group to create RAID LUN resource(only select one RAID group)

Name	Level	Capacity	Free Capacity	UUID
<div style="border: 1px solid #ccc; padding: 20px; width: 100px; margin: 0 auto;">  No Data </div>				

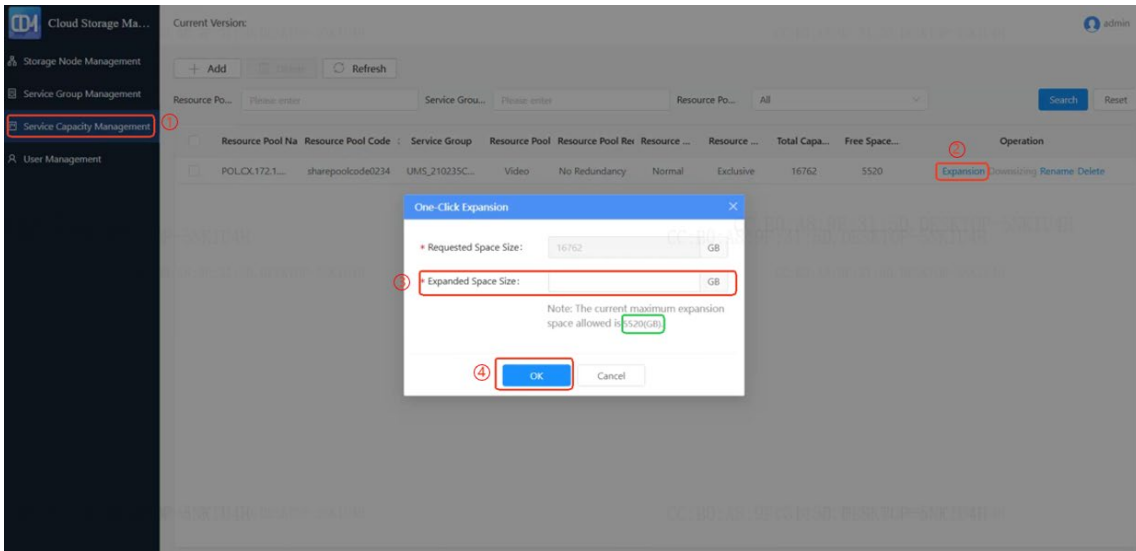
3. Expand Storage on UNV Guard

- 1) Open a browser and go to (<http://UNV Guard IP address:8096>) to log in to the Cloud Storage Management System interface. The default username is admin and default password is admin.
- 2) Go to **Storage Node Management**, check the corresponding IPSAN, and click **“Scan”** to detect the new capacity. After scanning, the unimported capacity can be seen in the **Unimported space** column.

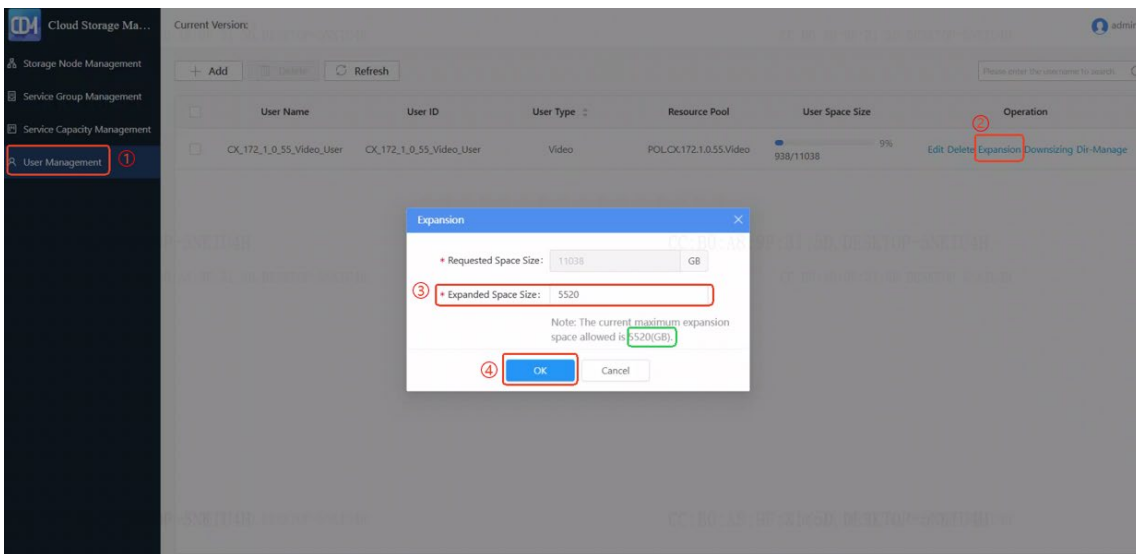


- 3) Navigate to **Service Capacity Management**, click **“Expansion”**, enter the required expansion capacity in the popup, and click **“OK”**.

During the expansion process, the Resource Status will display Expanding. Wait patiently until the status changes back to Normal before proceeding.



- Go to **User Management**, click **“Expansion”**, enter the required expansion capacity for the User account in the popup, and click **“OK”**.



4. Expansion Completed

After these steps, the added IPSAN capacity will be reflected in the UNV Guard web interface.